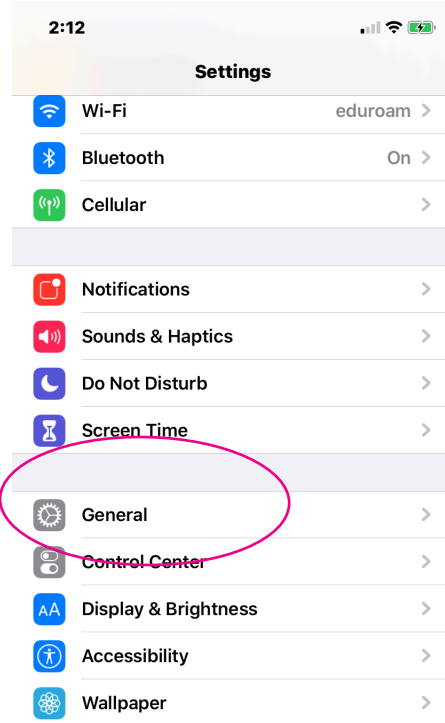
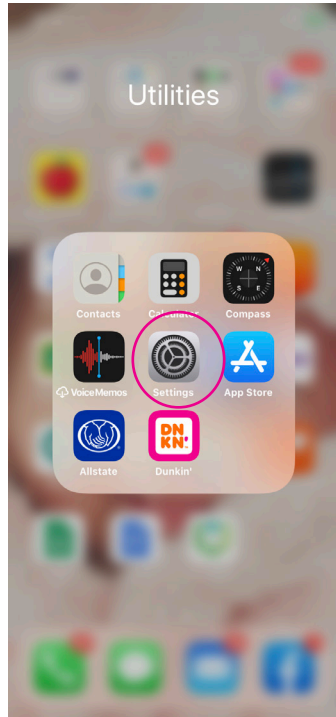
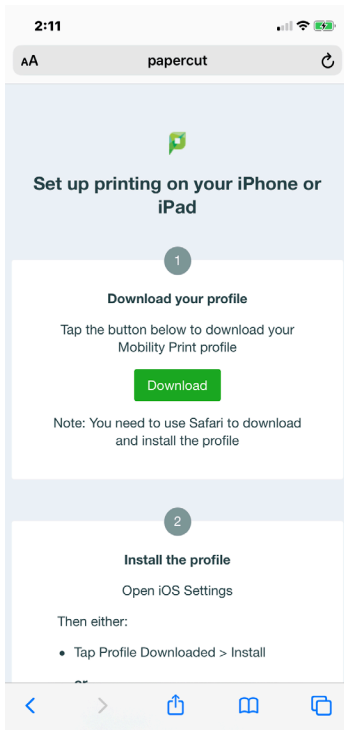
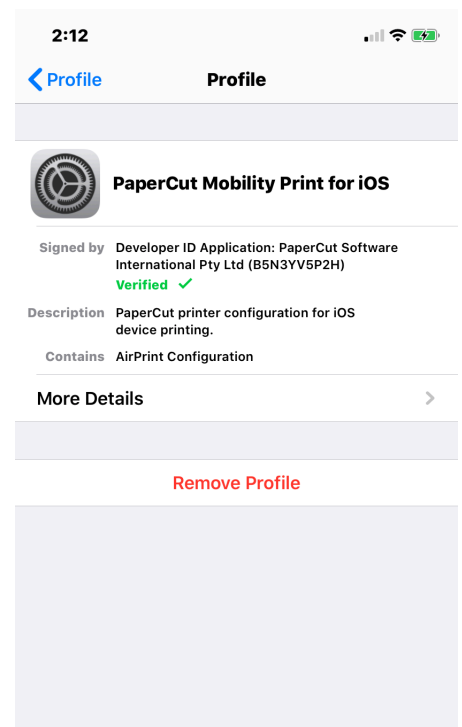
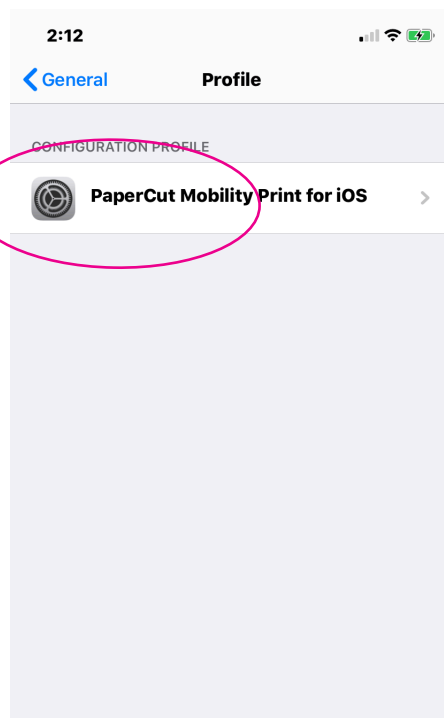
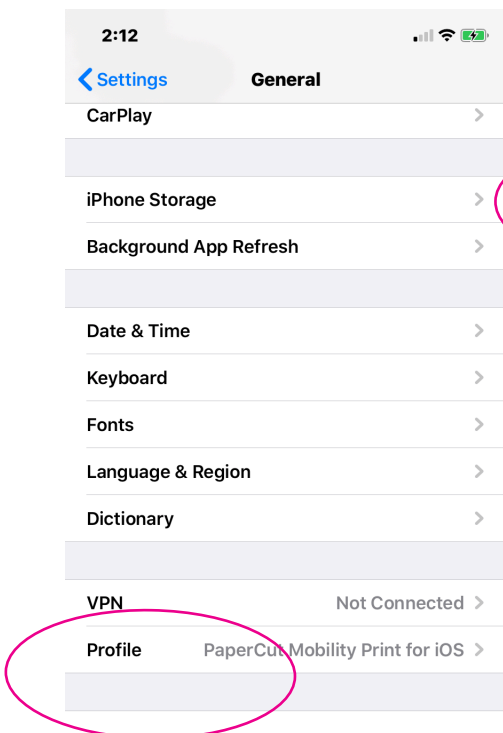


HOW TO SET UP MOBILITY PRINT FOR AN IPHONE

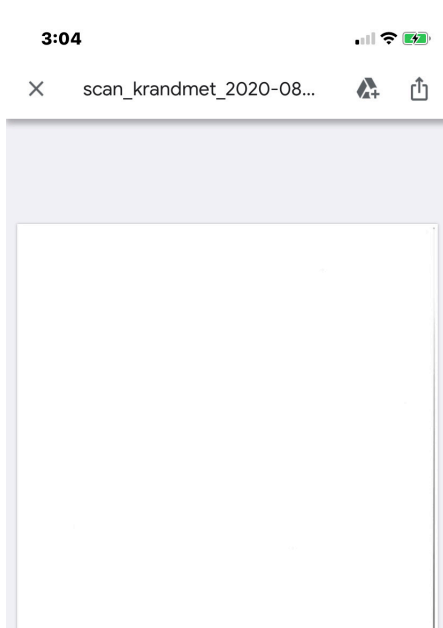
First, go to <http://papercut:9163/setup> (make sure you are connected to eduroam, the college's wifi network)



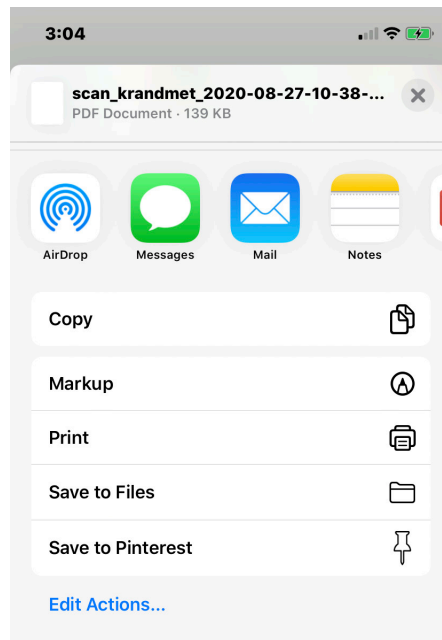
Next to go settings and then general.



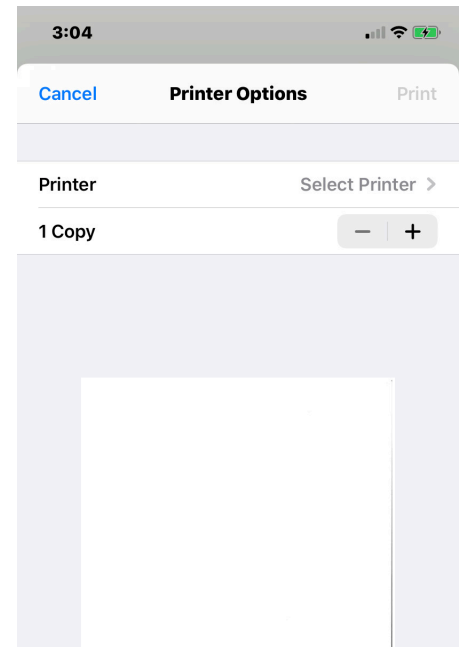
HOW TO SET UP MOBILITY PRINT FOR AN IPHONE



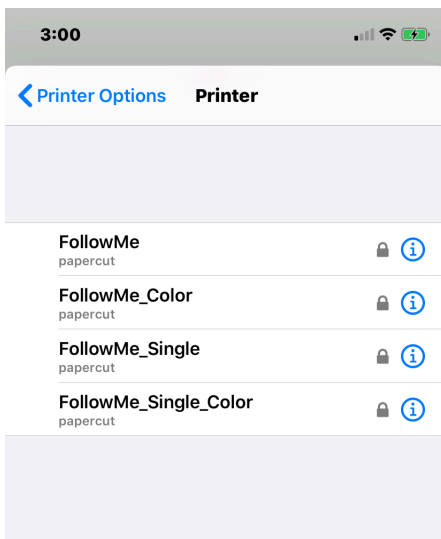
Open your file



Choose print

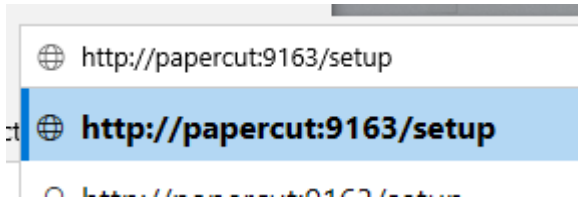


Choose the number of copies.

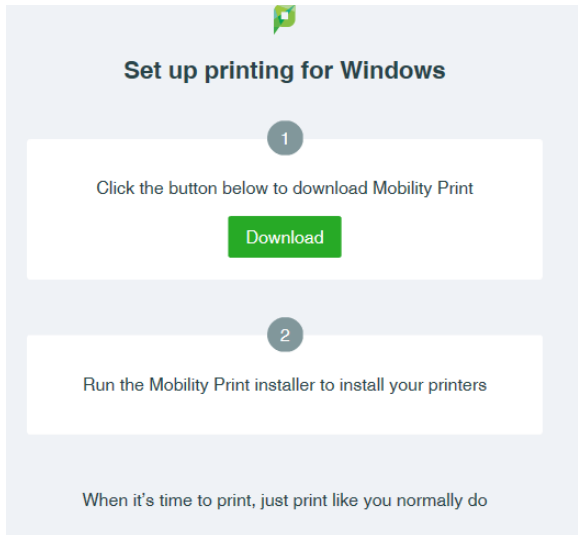


Choose which queue you want to send the job to. You will be prompted to put in your CamelWeb username and password the first time you use each queue. Once you hit print, you can go and tap your card at the device of your choosing and release your print job.

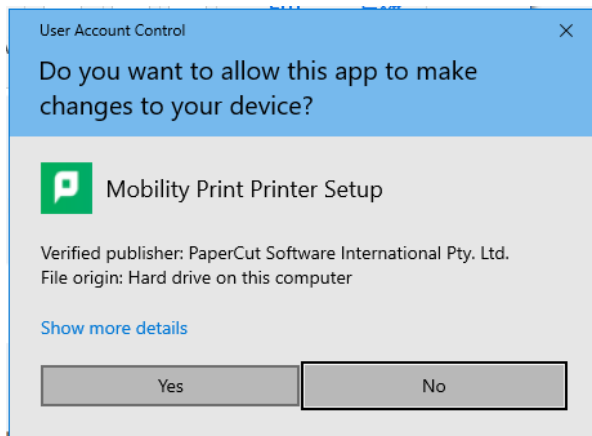
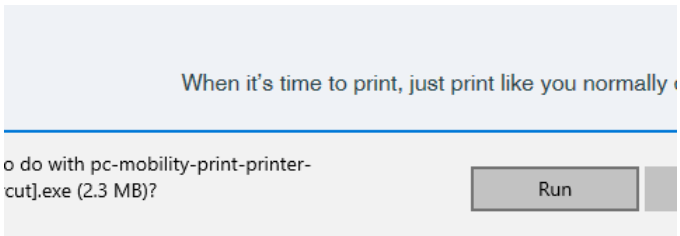
How to set up PaperCut Mobility Print (laptop)



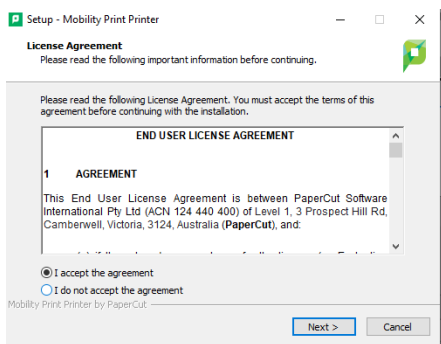
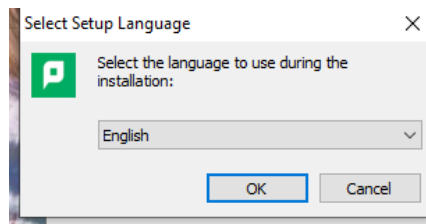
First type <http://papercut:9163/setup> into a web browser while logged in to eduroam. (The college's wifi network)



Then click the green download box
Then click run.

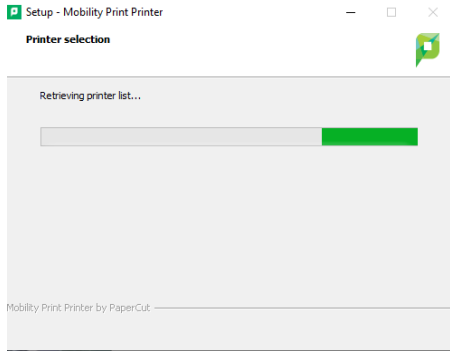


Then click yes and then type in the username and password to your device and select your language.



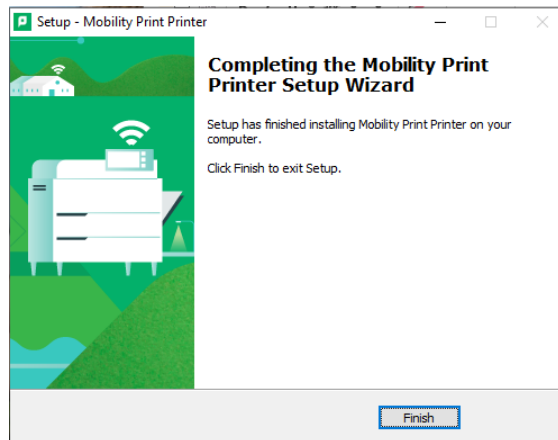
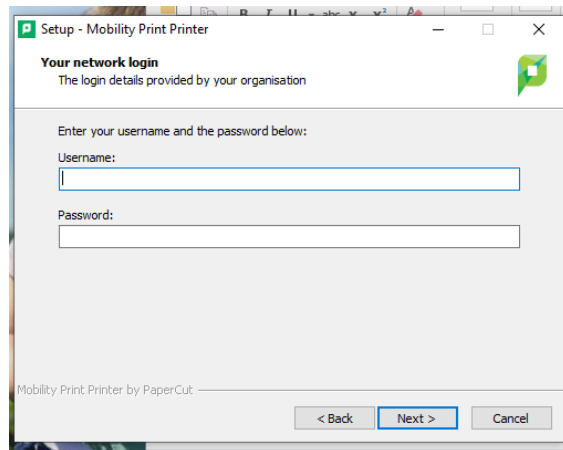
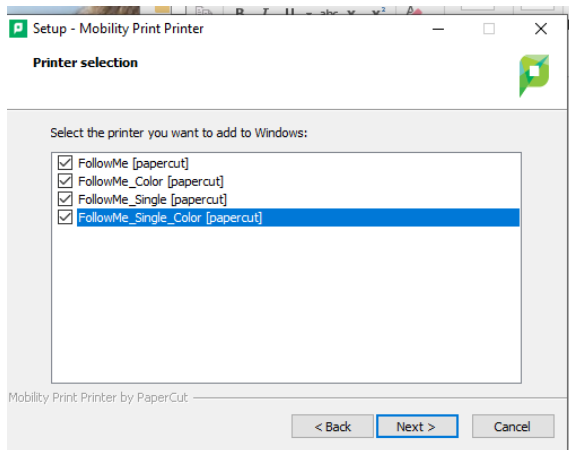
Click yes to the agreement and then next.

How to set up PaperCut Mobility Print



The installer will process and then check all 4 boxes to have all of the print queues.

Enter your CamelWeb Username and password when prompted, so PaperCut will recognize your account.



Last click finish.

Then when you go to file print you can choose any of the 4 print queues that you downloaded.

Follow me is black and white double sided

Follow me color is color double sided

Follow me single is black and white single sided

Follow me single color is single sided color