

## Diversity Data on Faculty Members and Full-Time Undergraduates

### Fall 2019

When reporting campus population data to the federal government, institutions must use a set of categories that blend race, ethnicity, and citizenship. For example, non-U.S. citizens are reported as such, regardless of their race/ethnicity. The tables below show those figures as well as the ones that result when we count our non-U.S.-citizen students and faculty members by their race/ethnicities. These methods of counting yield two different measures of student and faculty diversity, neither of which is necessarily more accurate. For some purposes, we are interested in knowing our percentage of or U.S. students and faculty of color, and for other purposes, we want to know about people of color in general. (Note that students and faculty members counted as U.S. citizens include foreign-born, naturalized citizens; permanent residents; and dual citizens.)

#### FALL 2019 FULL-TIME FACULTY MEMBERS

	ONLY U.S. CITIZENS COUNTED BY RACE/ETHNICITY		ALL FACULTY COUNTED BY RACE/ETHNICITY	
	#	%	#	%
American Indian or Alaska Native	1	0.5%	1	0.5%
Asian	16	8.7%	25	13.7%
Black or African American	10	5.5%	12	6.6%
Hispanic or Latino	13	7.1%	13	7.1%
Native Hawaiian or Other Pacific Islander	0	0.0%	0	0.0%
Two or more races	0	0.0%	0	0.0%
White	124	67.8%	132	72.1%
Race unreported	0	0.0%	0	0.0%
Non-U.S. citizens	19	10.4%		
<b>TOTALS</b>	<b>183</b>	<b>100.0%</b>	<b>183</b>	<b>100.0%</b>

% U.S. citizen faculty of color	21.9%
% faculty of color	27.9%

Source: Office of Institutional Research tallies using Common Data Set guidelines

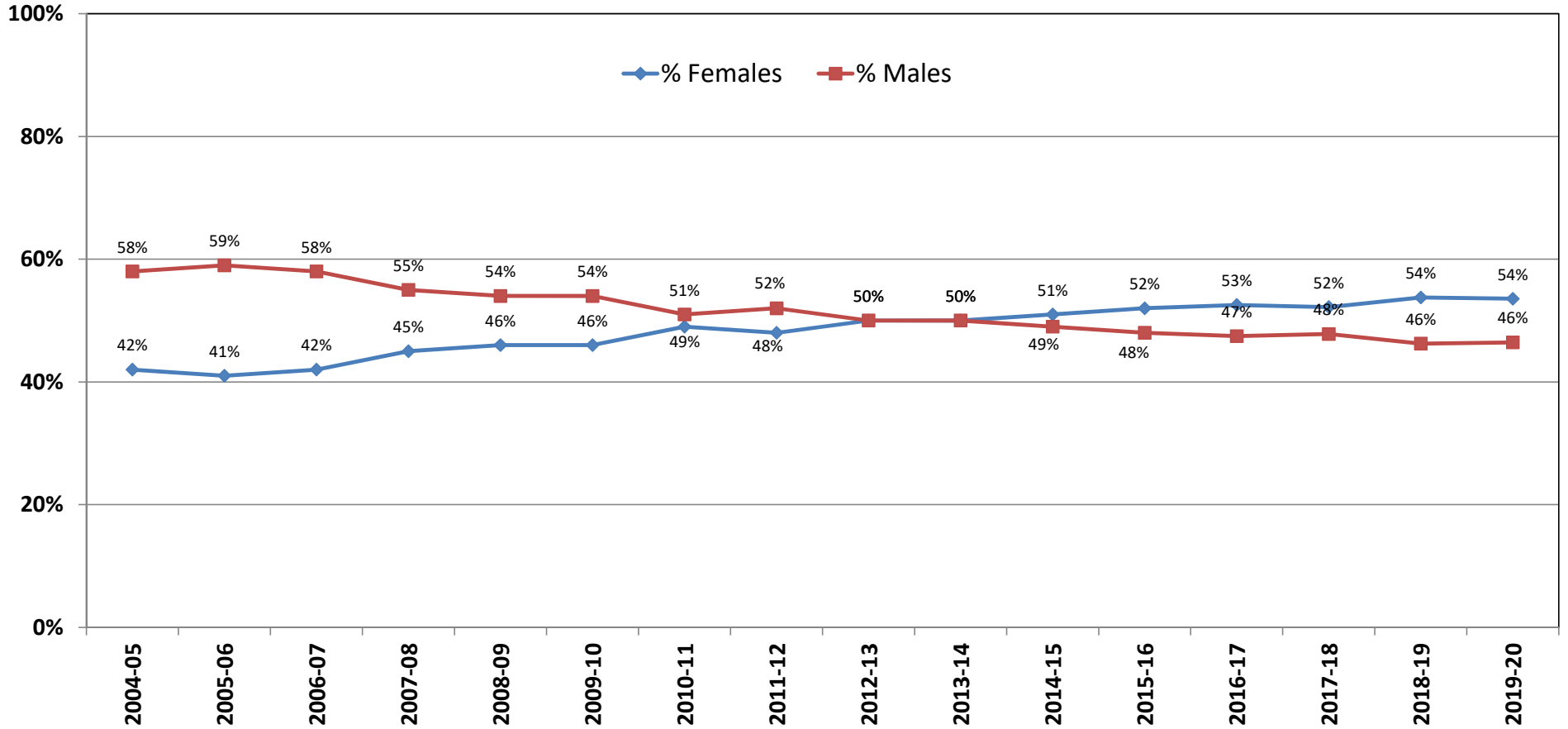
#### FALL 2019 FULL-TIME UNDERGRADUATES

	ONLY U.S. CITIZENS COUNTED BY RACE/ETHNICITY		ALL STUDENTS COUNTED BY RACE/ETHNICITY	
	#	%	#	%
American Indian or Alaska Native	2	0.1%	2	0.1%
Asian	74	4.1%	156	8.6%
Black or African American	69	3.8%	85	4.7%
Hispanic or Latino	180	9.9%	194	10.7%
Native Hawaiian or Other Pacific Islander	1	0.1%	1	0.1%
Two or more races	68	3.7%	73	4.0%
White	1,227	67.5%	1,258	69.2%
Race unreported	35	1.9%	50	2.7%
Non-U.S. citizens	163	9.0%		
<b>TOTALS</b>	<b>1,819</b>	<b>100.0%</b>	<b>1,819</b>	<b>100.0%</b>

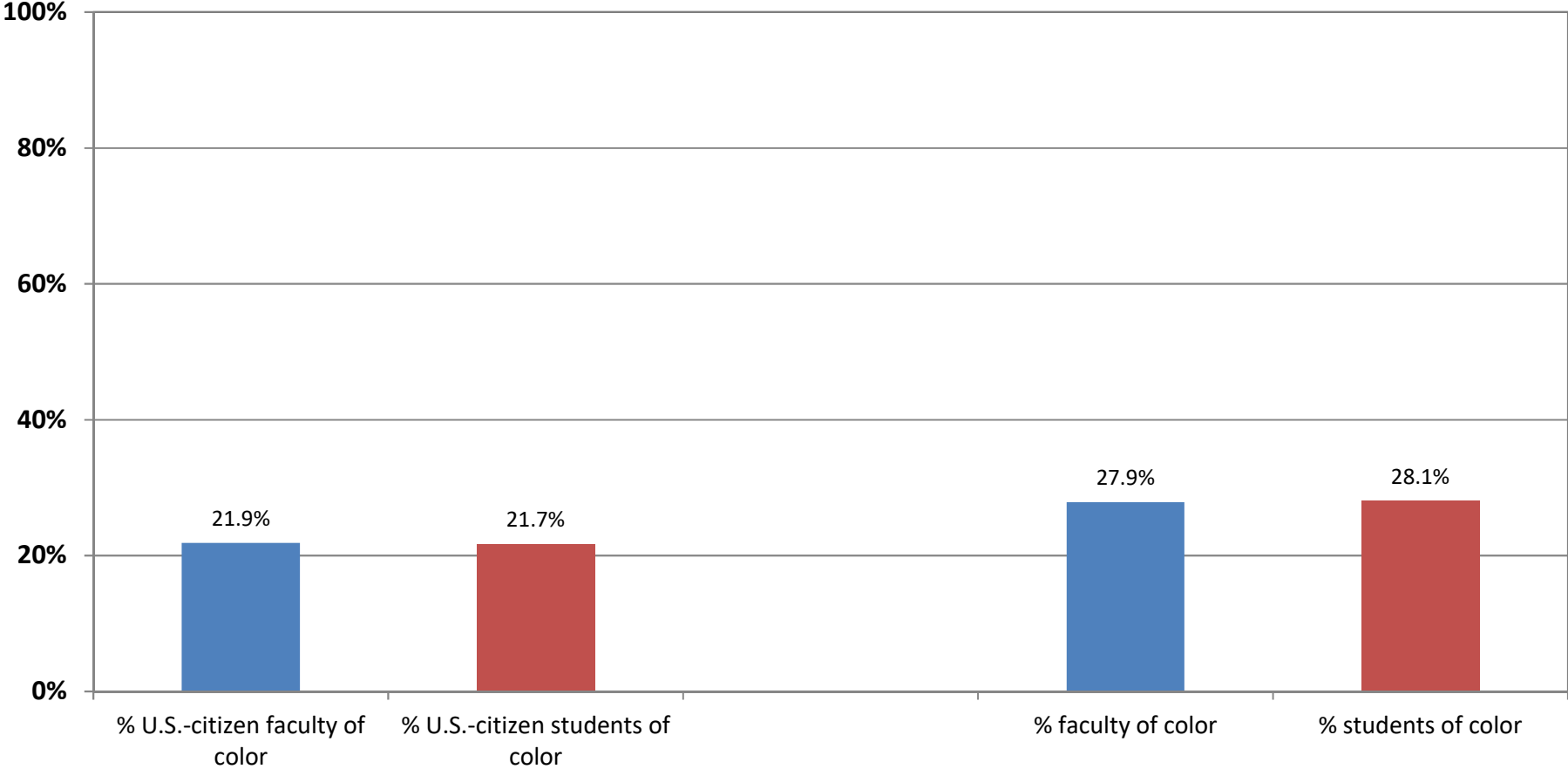
% U.S. citizen students of color	21.7%
% students of color	28.1%

Source: Office of the Registrar, IPEDS Fall Enrollment Survey 2019

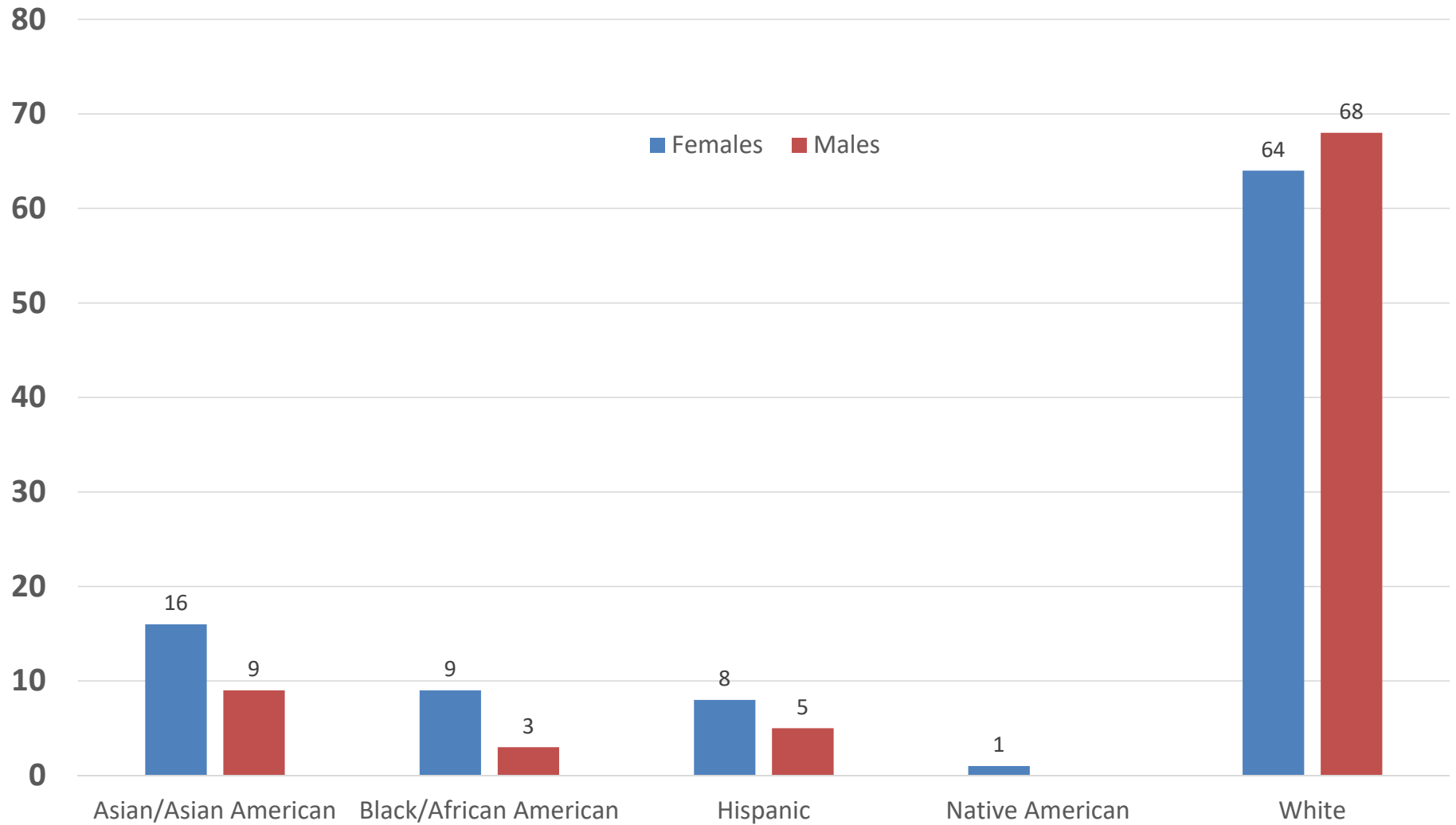
## Gender Composition of Connecticut College's Full-Time Faculty, 2004-05 to 2019-20



# Fall 2019 Faculty and Students of Color

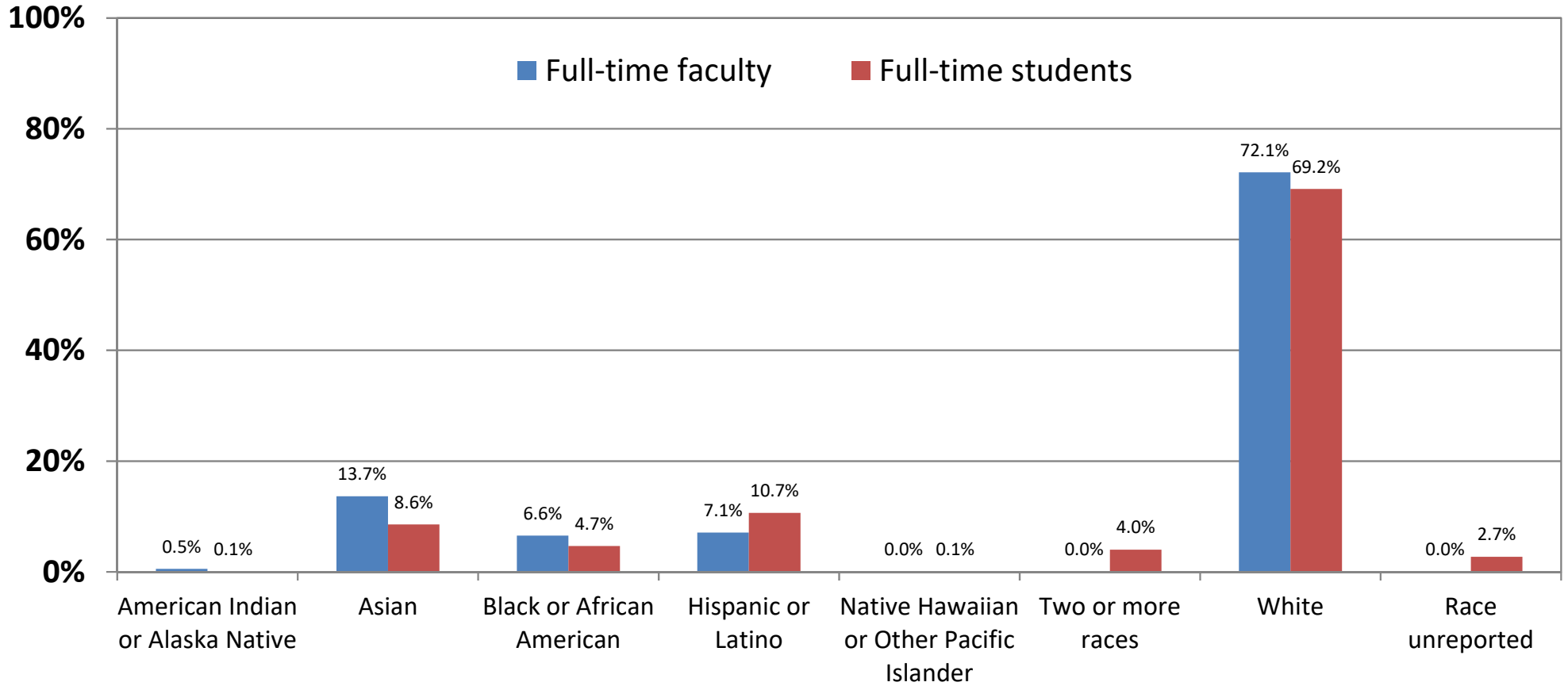


### Fall 2019 Full-Time Faculty Members by Race/Ethnicity

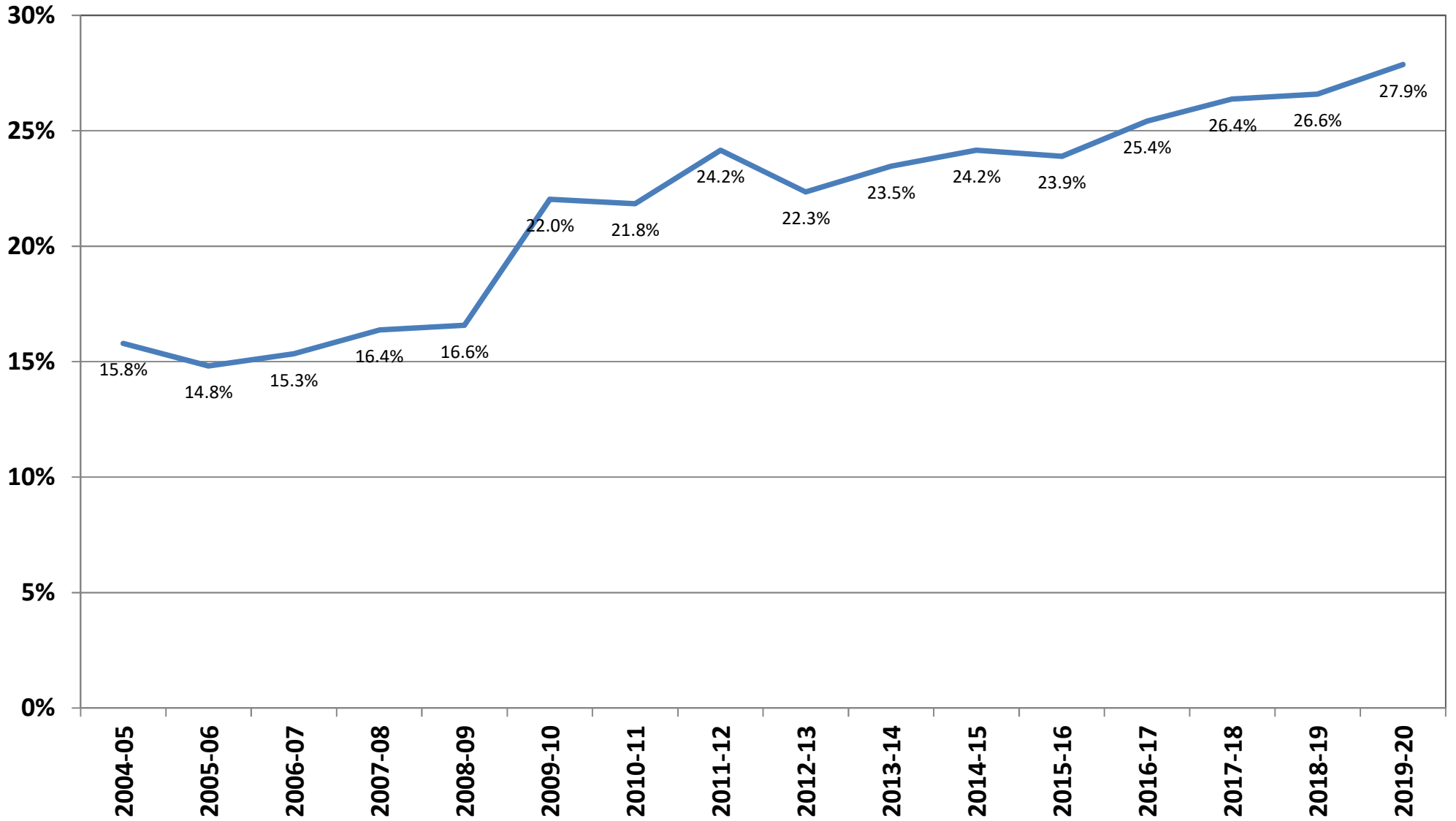


## Fall 2019 Full-Time Faculty Members' and Students' Race/Ethnicity

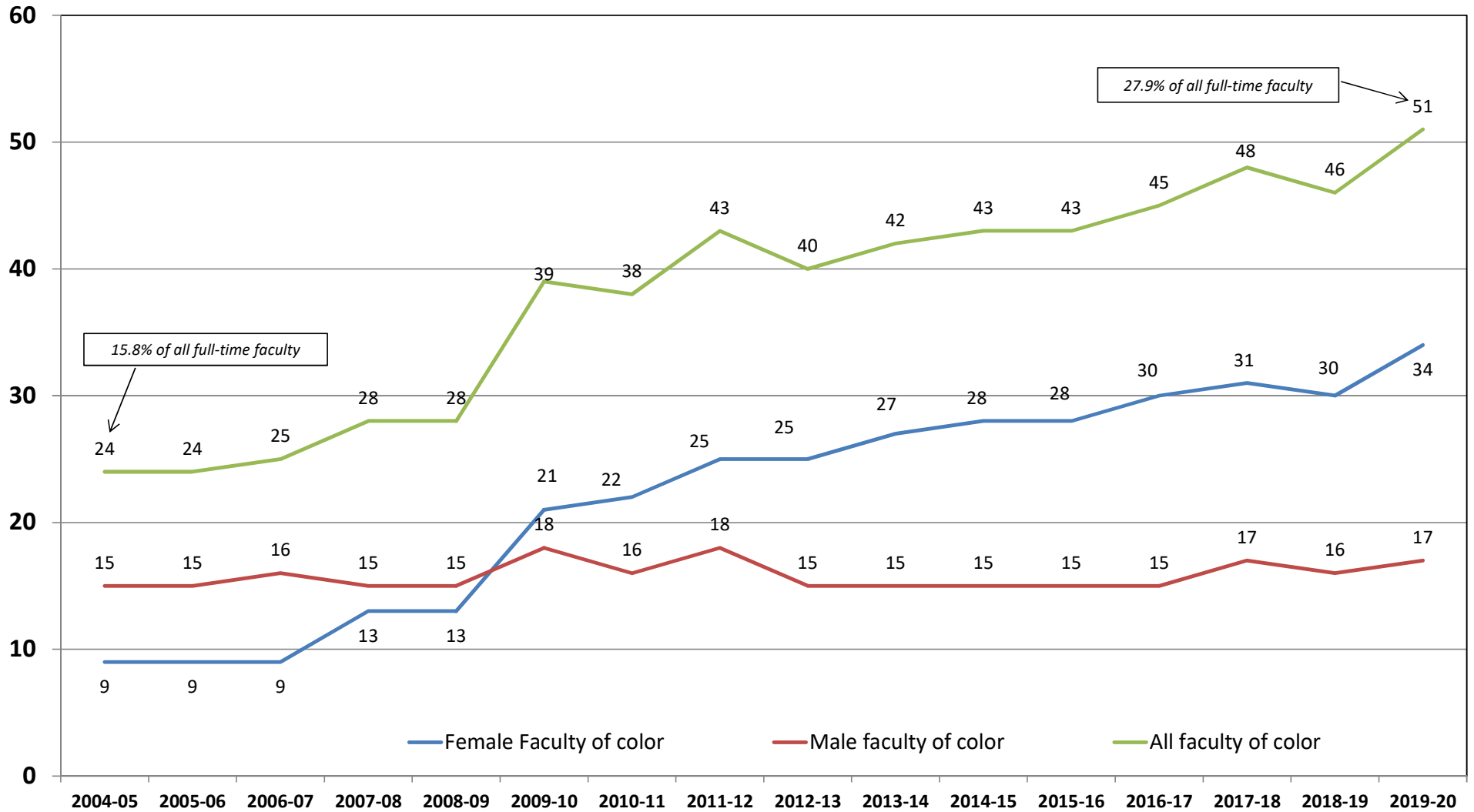
*Non-U.S.-citizen faculty members and students counted here by their race/ethnicity*



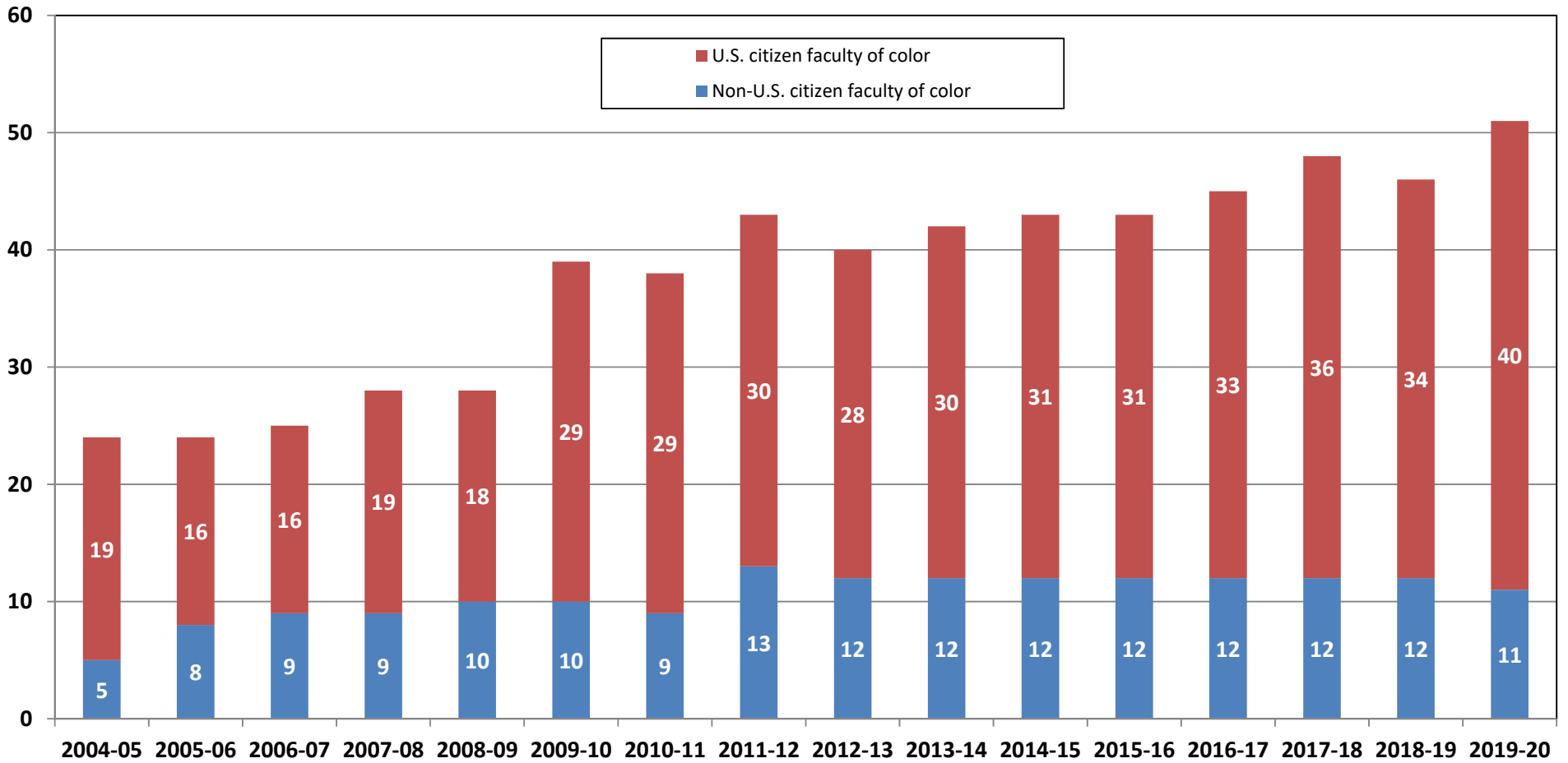
## Percentage of Full-Time Faculty who are Persons of Color, Fall 2004 to Fall 2019



## # Faculty of Color by Gender, Fall 2004-Fall 2019



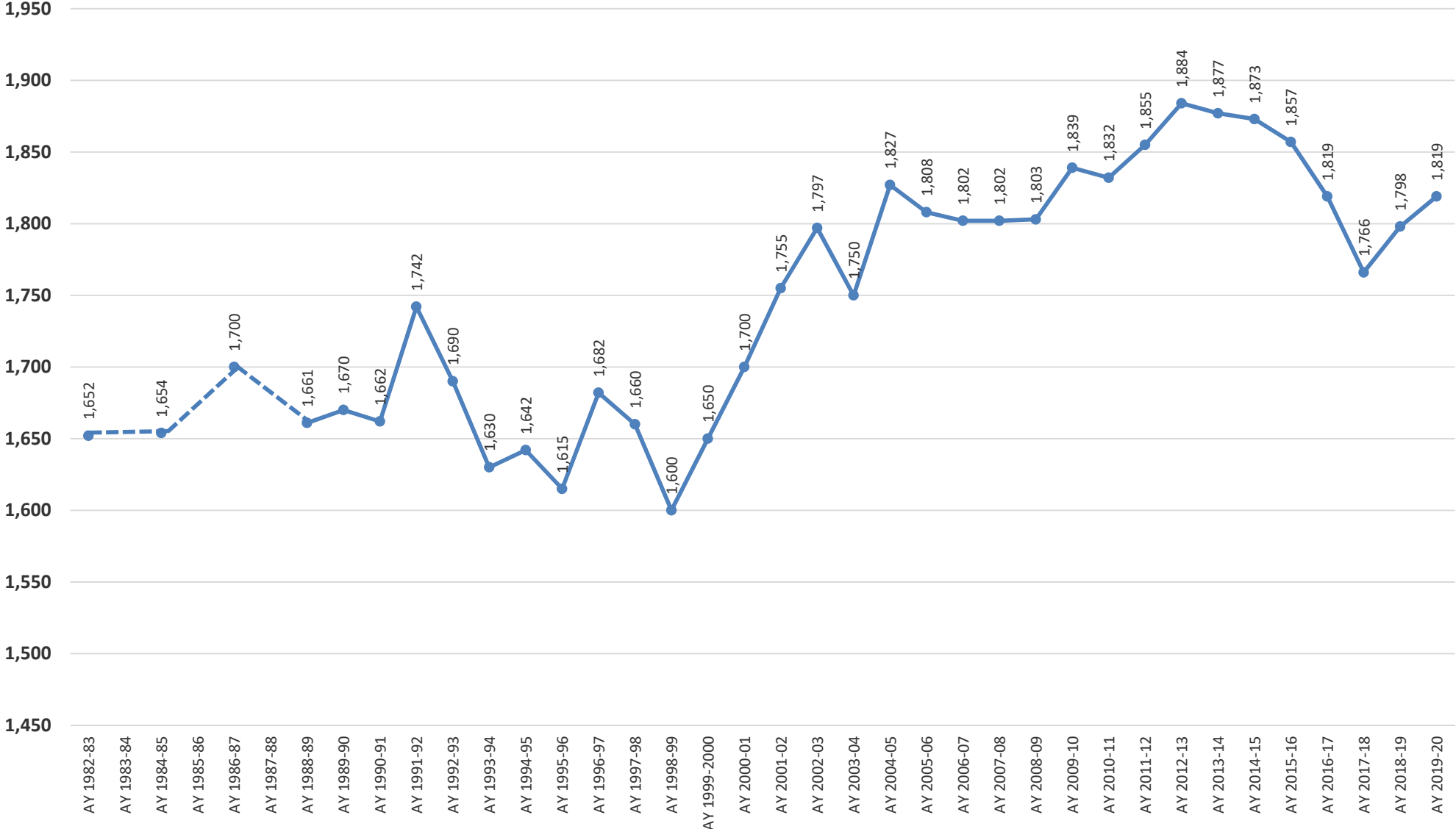
## Connecticut College Faculty of Color, AY 2004-05 to Present



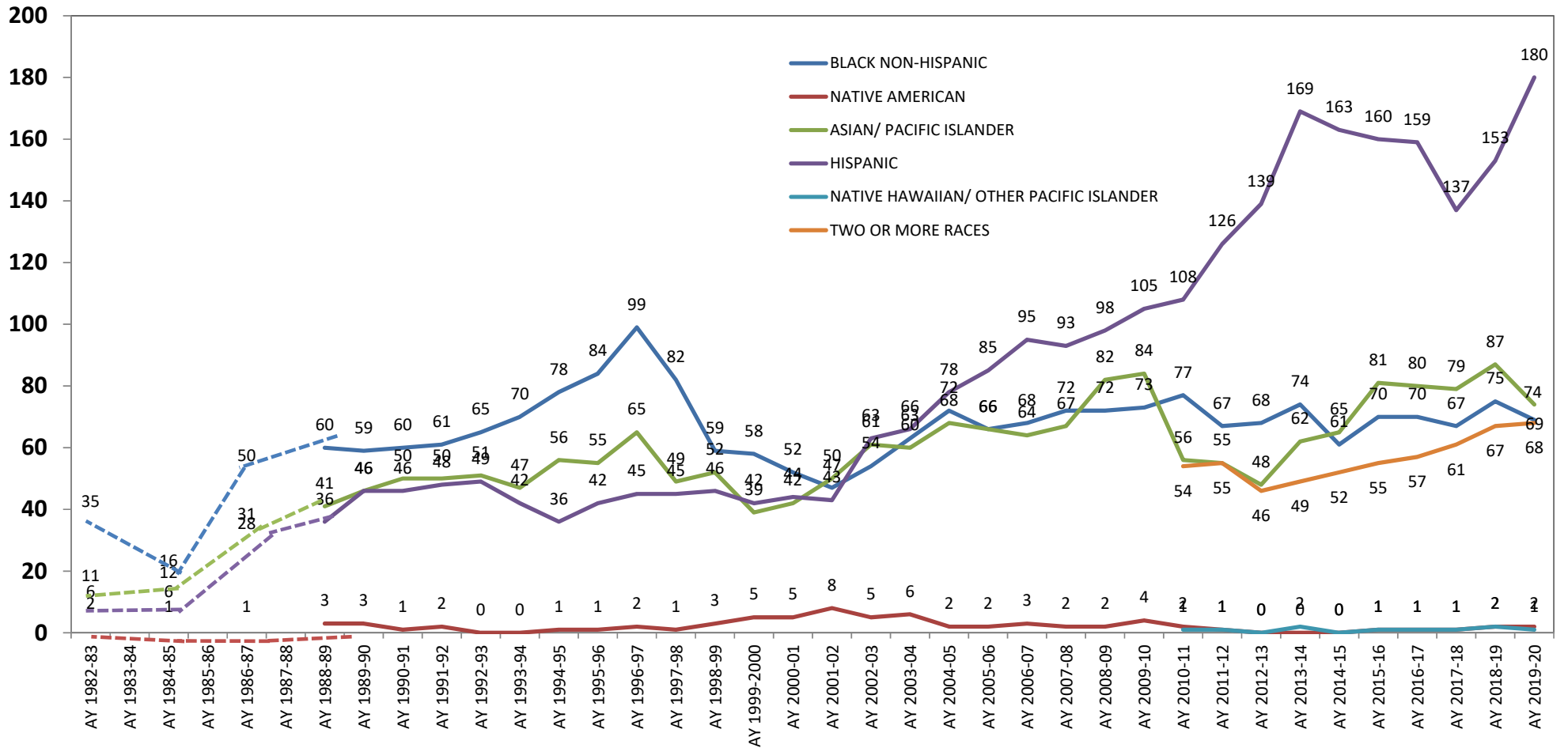


# Connecticut College Full-Time Undergraduates

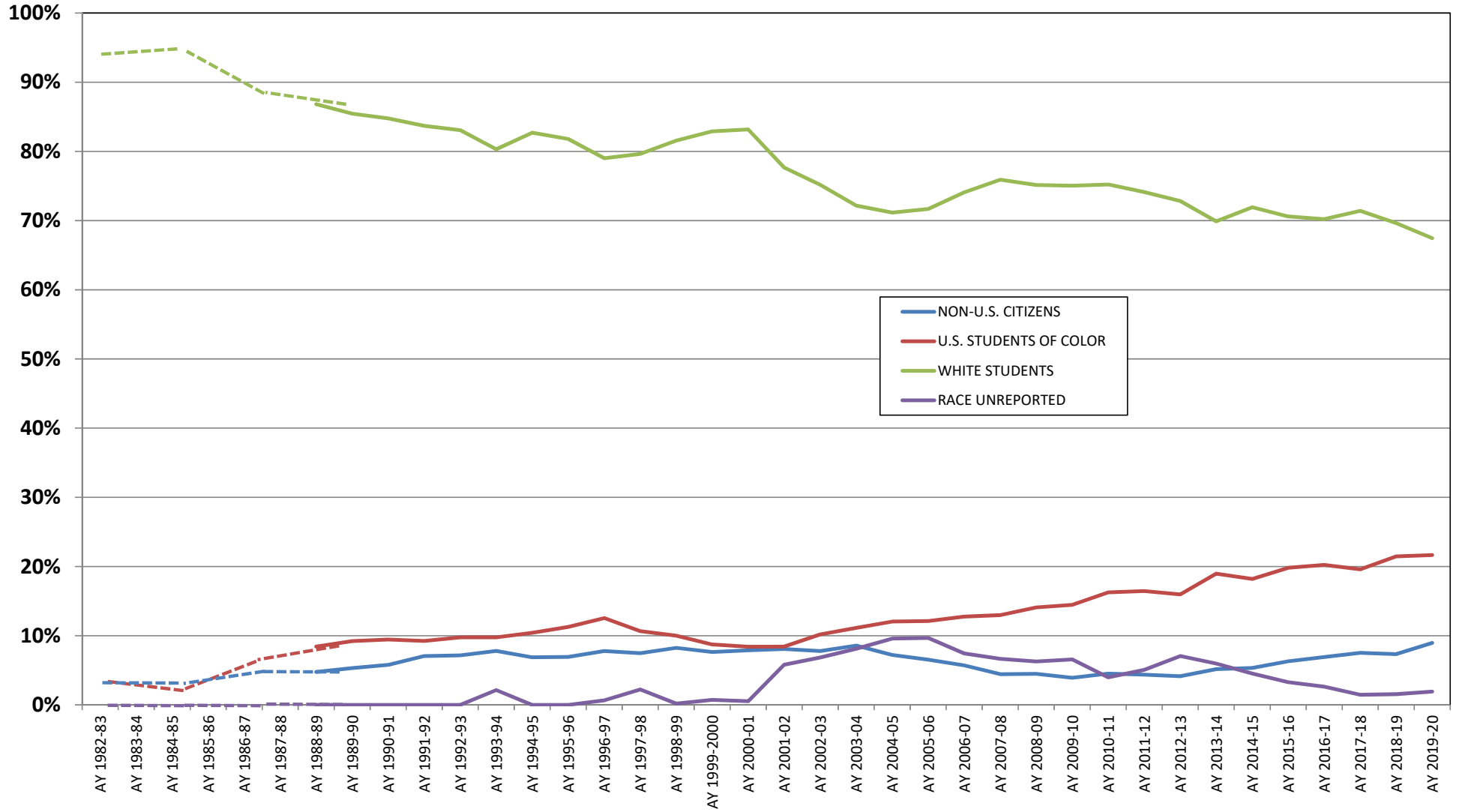
(Source: IPEDS Fall Enrollment Survey)



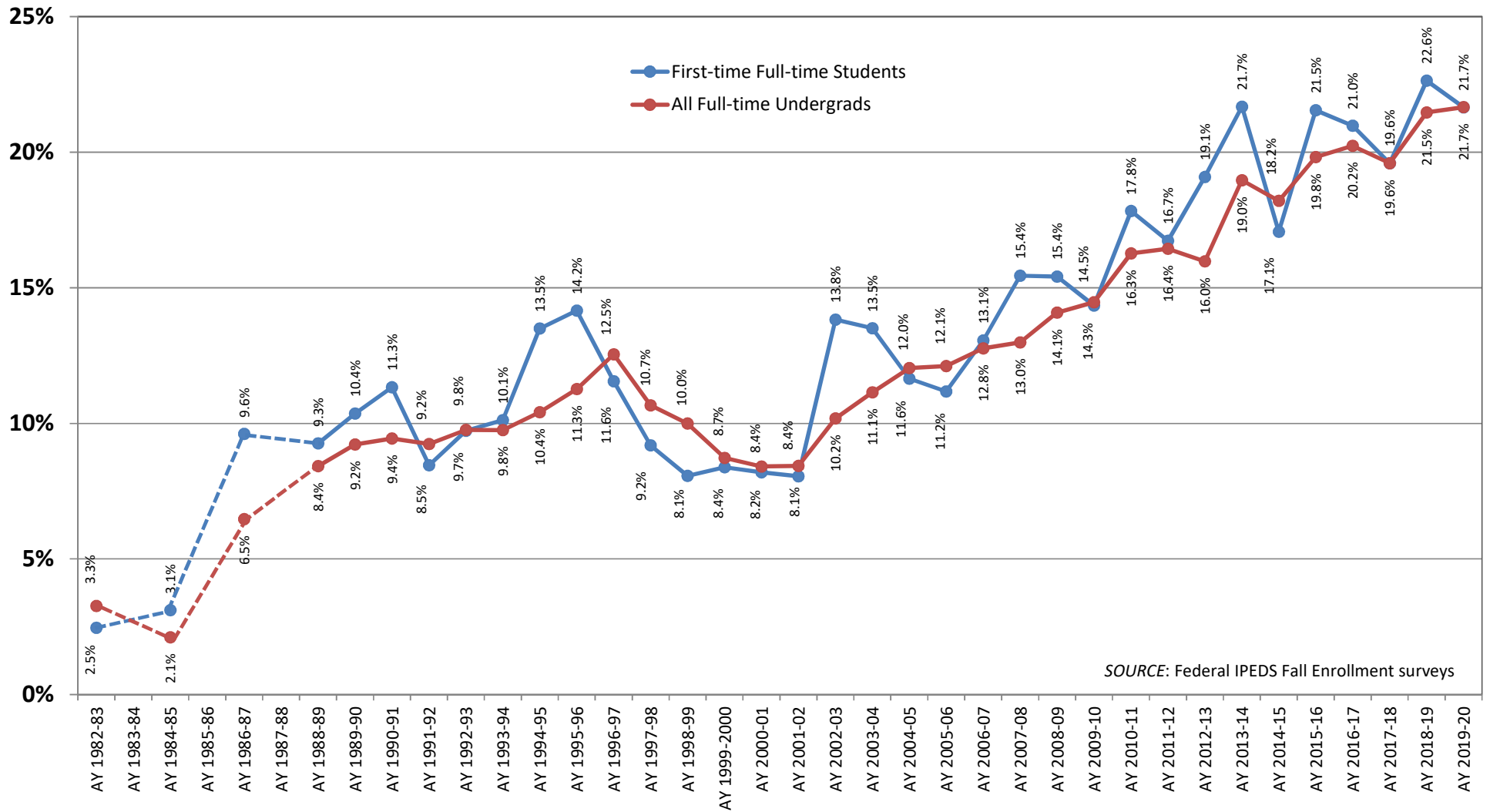
## Numbers of Full-Time Undergraduate U.S. Students of Color



## Connecticut College Full-Time Undergraduate Enrollments, Fall 1982 to Fall 2019



## Historical Percentage of U.S. Students of Color, Fall 1982 to Fall 2019



SOURCE: Federal IPEDS Fall Enrollment surveys